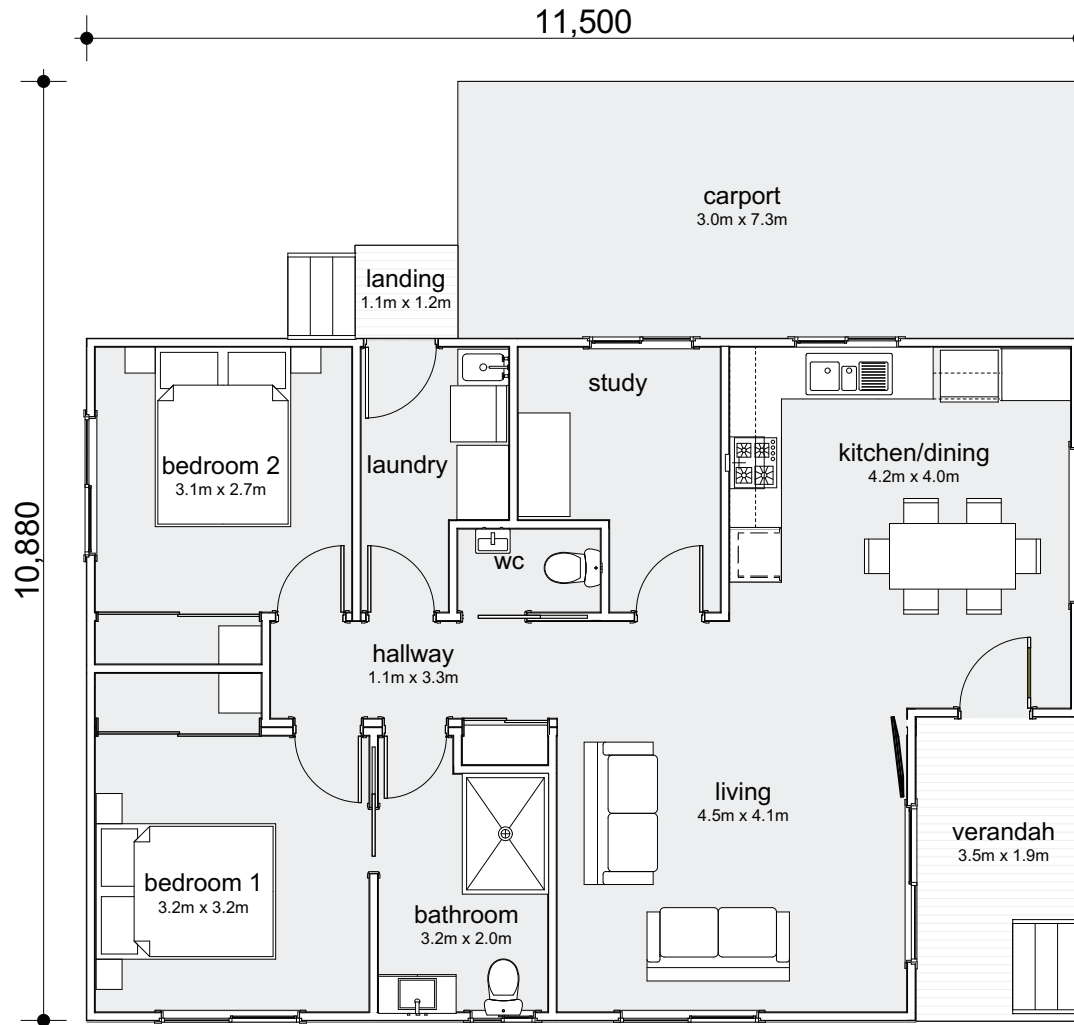


2 BEDROOM HOME + STUDY HOME



UNIPLAN GROUP
MODULAR - THE SMARTER WAY TO BUILD

LV2AS

2 | 1 | 2 | 1

Modules:	2
Total Area:	90.85m ²
Living:	18.4m ²
Verandah:	6.6m ²
Length:	11.5m
Width:	7.9m



Get in touch

We would be delighted to collaborate with you and exchange ideas for your upcoming project:

T: (02) 6773 8567 E: sales@uniplangroup.co

www.uniplangroup.com.au